



KYTC Division of Planning Structure

STP Meeting

Presentation by Mikael Pelfrey

Frankfort, Kentucky | April 13, 2023



Vision

Striving to be national leaders in transportation who provide transportation infrastructure and services for the 21st century that deliver new economic opportunities for all Kentuckians.

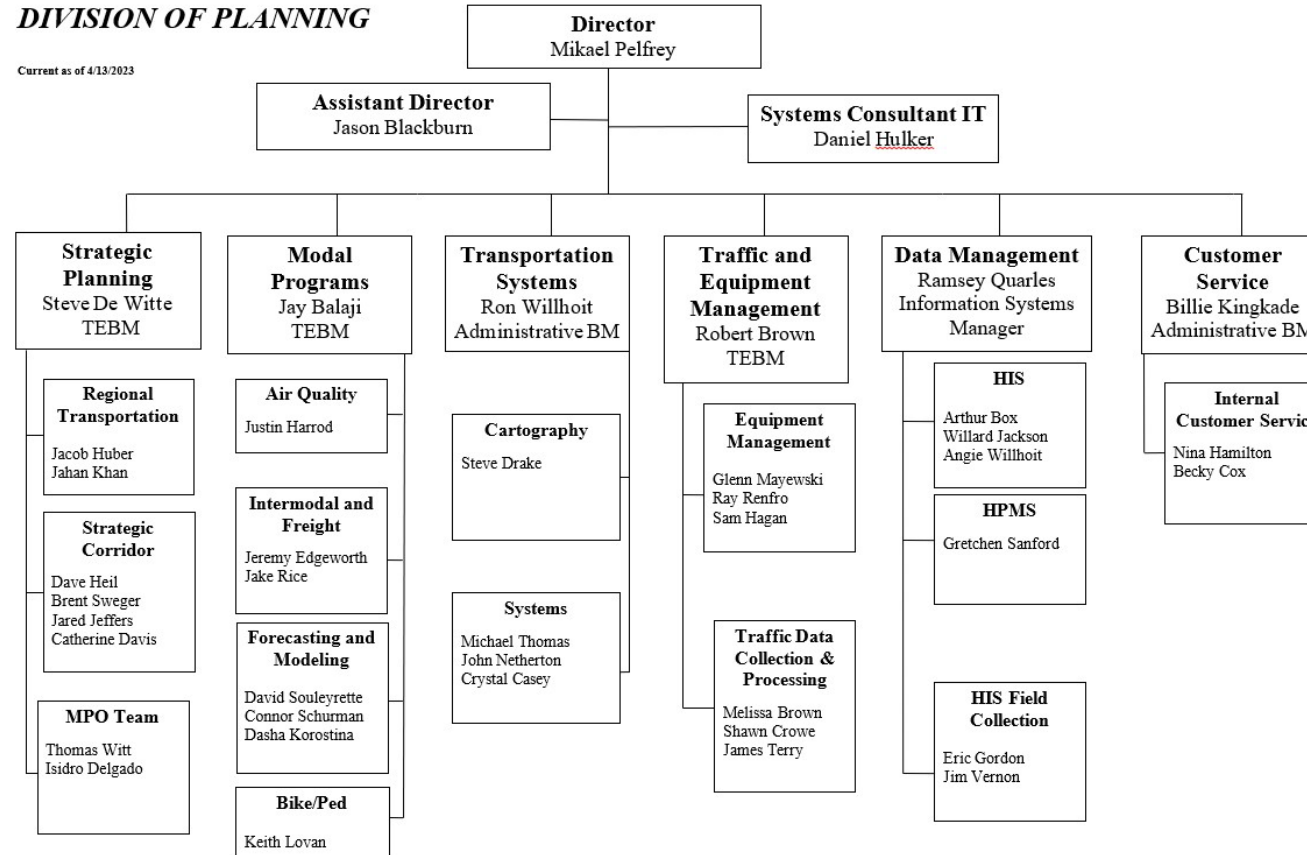
Mission

To provide a safe, efficient, environmentally sound and fiscally responsible transportation system that delivers economic opportunity and enhances the quality of life in Kentucky.

Organizational Chart

DIVISION OF PLANNING

Current as of 4/13/2023



Division of Planning



-  **Traffic Counts**
State, County, and Incorporated Area Traffic Volume Maps. Traffic Volume and Vehicle Classification Data
-  **Planning Highway Information (HIS)**
Roadway Assets, HPMS Reports, Route Systems, Functional Classification, and Geospatial Data
-  **Multimodal Freight Transportation**
Freight Planning, Intermodal Connectors, Rail Program, Ferryboat Operations, Riverports, and Aviation
-  **Traffic Forecasting and Modeling**
Forecasting Tools, Data, and Reports, Planning and Zoning Information, Traffic Demand Modeling
-  **Congestion Management**
Congestion Toolbox, Access Management Program and Guidance, Mobility Measures and Analysis

-  **Maps**
Official Highway Map, Roadway System Maps, Functional Classification Maps, Miscellaneous Maps, Interactive Maps
-  **Transportation Planning**
Statewide, Regional and Small Urban Area Transportation Planning. Metropolitan Planning Organizations (MPO)
-  **Planning Studies and Reports**
Programming, Scoping, Alternatives, Small Urban Area, Justification, and Feasibility Studies
-  **Bicycle and Pedestrian Program**
Bicycle and Pedestrian Procedures and Policies, Bicycle and Bikeway Commission, and Statewide Bicycle Tour Maps
-  **Air Quality**
Nonattainment and Maintenance Areas, Transportation Conformity, Congestion Mitigation and Air Quality

Contact Information:

Division of Planning
200 Mero Street
Frankfort, KY 40601
Phone: (502) 564-7183
Fax: (502) 564-2865
Hours: 8:00am-4:30pm EST, M-F

[Map It](#)

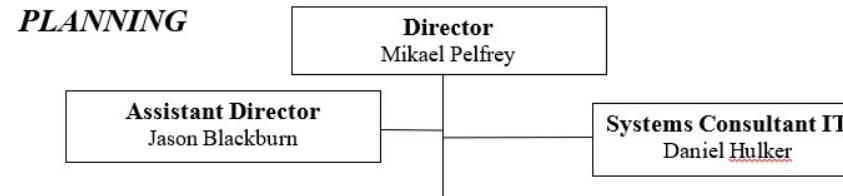
Navigation

- [Planning Home](#)
- [ADA Transition Strategies](#)
- [Adjusted Urban Boundaries](#)
- [Air Quality](#)
- [Bicycle and Pedestrian Program](#)
- [Coal Haul](#)
- [Congestion Management](#)
- [Complete Streets Manual](#)
- [Data Needs Analysis Studies](#)
- [Electric Vehicle Charging Program](#)
- [Freight Modes in Kentucky](#)
- [Freight Advisory Committee](#)
- [Functional Classification](#)
- [Map Sales](#)
- [Long Range Plan](#)
- [Multimodal Freight Transportation](#)
- [National Truck Network \(NTN\)](#)
- [Official Highway Map](#)
- [Planning Highway Information \(HIS\)](#)
- [Planning Guidance Manual](#)
- [Planning Studies & Reports](#)
- [Planning Work Program](#)
- [State Primary Road System \(SPRS\)](#)
- [Public Involvement Plan](#)
- [Small Urban Area Planning](#)
- [Traffic Counts](#)
- [Traffic Forecasting and Modeling](#)
- [Transportation Planning](#)

Director/Asst. Director

Responsibilities

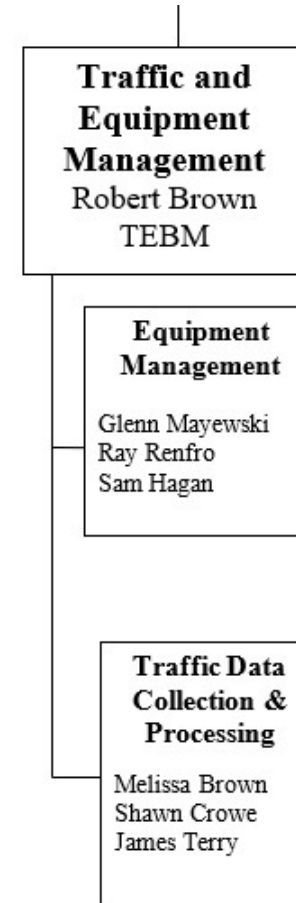
- SPR Work Program
- Division Budget
- Personnel Actions
- Project Prioritization Process (SHIFT)
- Research Studies through Kentucky Transportation Center (KTC)



Traffic and Equipment Management

Responsibilities

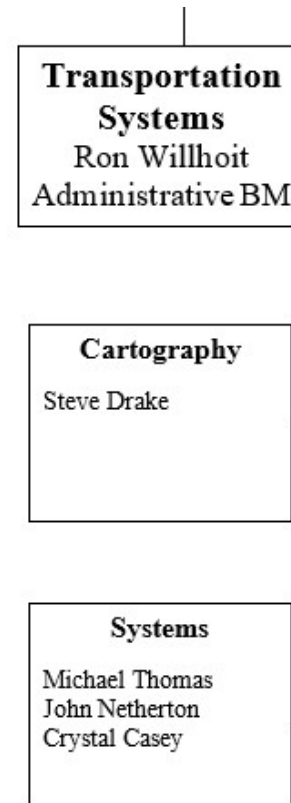
- Collect, process, and store traffic data
- Procure, distribute, operate, maintain, repair equipment at traffic data sites
- Prepare reports for FHWA, KYTC, planning and governmental agencies, etc.
- Volume, classification (ATR), weight (WIM) data
- Statistics
 - 18,500 traffic count stations
 - 98 permanent ATR stations



Roadway Systems, Cartography

Responsibilities

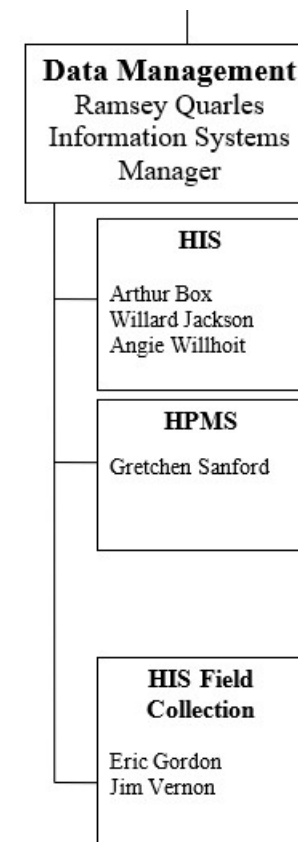
- Maintain records for State Primary Road System (SPRS), National Truck Network (NN), Coal Haul Highway System, and Forest Highway System
- Generate Official Orders for roadway ownership transfers (KRS 177.020 and 603 KAR 3:030)
- Provide ton-mile statistics to Dept. of Local Govt. (DLG) for coal transported on KY roadways and publish Official Coal Haul Hwy System Report (KRS 177.977 and KRS 42.455)
- Prepare and submit request to AASHTO Standing Committee on Highways, US Route Numbering Special Committee, for significant changes to routing of interstates, US routes, etc.
- Prepare various electronic maps – Official Hwy, SPRS, Functional Class, Traffic Count, etc.



Data Management

Responsibilities

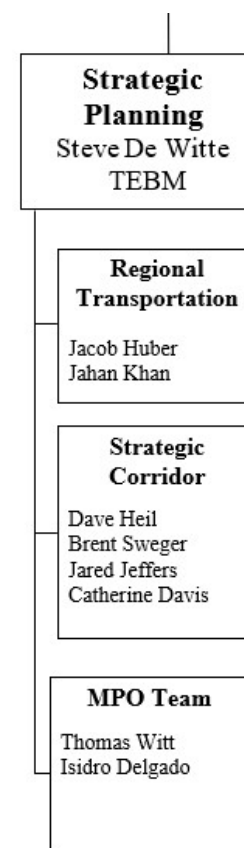
- Maintain KYTC Highway Information System (HIS) database
- GIS road centerline and info on roadway characteristics
- Maintain up-to-date route network of asset locations w/ extraction capabilities for updates to network
- Functional classification reviews and change requests
- Coordinate changes to NHS and Strategic Highway Network
- Submit annual Highway Performance Monitoring System (HPMS) data submittal to FHWA; also utilized for analysis and measurement of highway system performance



Strategic Planning

Responsibilities

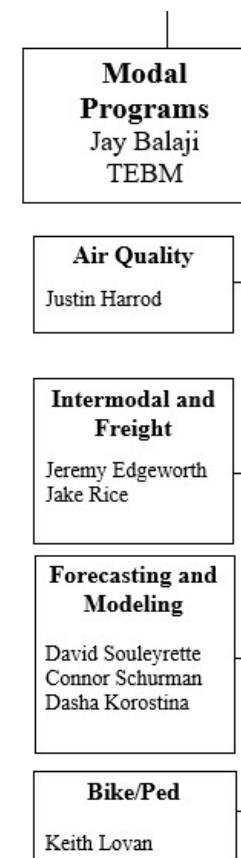
- Oversee technical project studies
 - Develop draft purpose and need statements
 - Identify environmental red flags
 - Conduct public involvement
 - Evaluate and prioritize alternatives
 - Generate cost estimates
- Coordinate to support statewide and regional planning processes, oversee ADD Regional Transportation Annual Work Program
- Update Public Involvement Process (23 CFR 450.210) and LRSTP
- Maintain CHAF database
- Ensure state and local transportation projects remain eligible for federal funding
- Provide technical assistance, oversight, and review of MPO activities, programs, documents, etc. and promote planning processes consistent w/ federal regulations
- Submit MPO amendments and administrative modifications



Multimodal Programs

Responsibilities

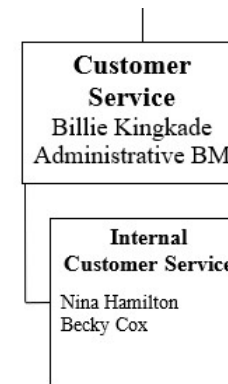
- Calculate and report performance measures/targets for Interstate and non-Interstate NHS to carry out National Highway Performance Program (NHPP); PM3
- Assist w/ best practices to ensure compliance w/ federal regs to deliver projects within designated nonattainment and maintenance areas
- Collect data to plan, promote, assist in the development of a multimodal and intermodal transportation system (public riverports, railroads, general freight, ferries, etc.)
- Analyze traffic trends, provide projected traffic volumes for planning, project development, etc. and update/maintain local, regional, and statewide travel demand models
- Coordinate efforts w/ state agencies, local governments, organizations, etc. to expand active transportation opportunities
- Prepare, assist, and promote bike/ped programs working w/ project teams to recommend opportunities and options for bike/ped facilities for proposed and ongoing highway projects, local projects, etc.



Customer Service

Responsibilities

- Timesheets and payroll
- Travel requests
- Process consultant invoices
- Assist w/ personnel actions
- Establish contracts in eMARS
- Format and process memos and letters





transportation.ky.gov

Questions?

Mikael Pelfrey

mikael.pelfrey@ky.gov

(502) 782-5073